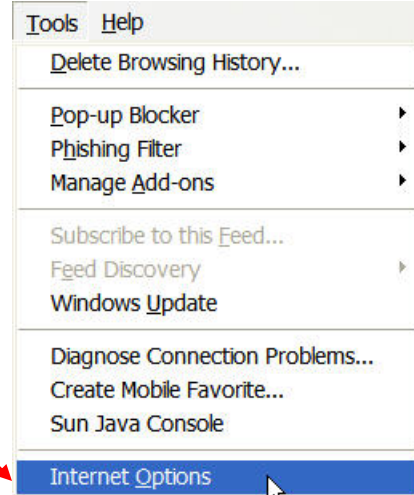


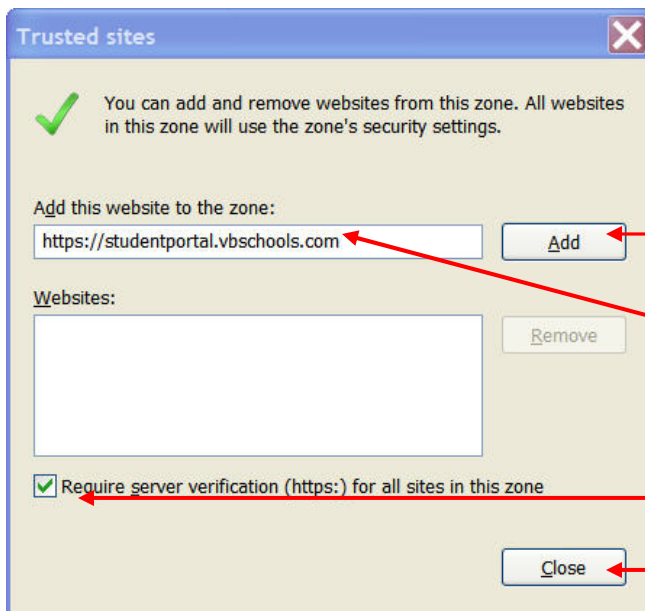
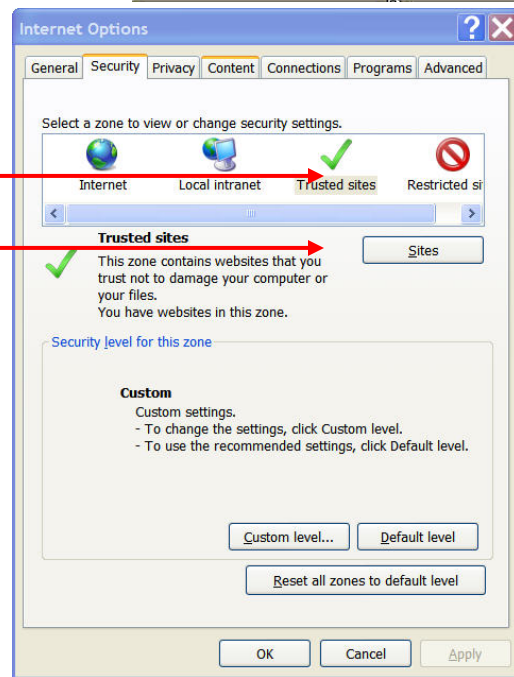
# Adding SharePoint to your Trusted Sites

Open Internet Explorer.  
On the file menu, click on **Tools**.  
Select **Internet Options**.



Select the **Security** tab.  
Choose "Trusted Sites".

Click on **Sites**.



The site address should be in the window  
Click on Add.

If the address is not in the window  
Type in  
`https://schools.vbcps.com`

Make sure the Require server verification check box is checked.

Click on close.

Click on Apply.